

ALAFIA RIVER (TAMPA HARBOR ZONE 8) HILLSBOROUGH COUNTY, FLORIDA HYDROGRAPHIC EXAM SURVEY FY21 33 AND 34-FOOT PROJECT

SURVEY ZONE	CUTS
8	ALAFIA RIVER ENTRANCE CHANNEL

LEGEND	
	MONUMENT
	LIGHTED BEACON
	GREEN DAYBEACON
	RED DAYBEACON
	RED LIGHTED BUOY
	GREEN LIGHTED BUOY
	CAN BUOY
	NUN BUOY
	TIDE STAFF
	PROJECT DEPTH

SURVEY NOTES

1. REFER TO SURVEY NO. 21-043.
2. DEPTHS DEPICTED BY THIS SURVEY ARE REFERENCED TO MEAN LOWER LOW WATER (MLLW), TIDAL EPOCH 1983-2001 AS REPORTED BY THE NATIONAL OCEANIC AND ATMOSPHERIC ADMINISTRATION (NOAA). A MODIFIED VERSION OF NOAA'S VDATUM MODEL WAS USED TO CALIBRATE TO THE PUBLISHED MLLW HEIGHTS OF THE BENCH MARKS BELOW:

NOAA TIDAL STATION 872-6657, DAVIS ISLAND, HILLSBOROUGH BAY FOR ALL CUTS (PID: AG6024)
3. TIDAL REDUCTIONS WERE OBTAINED UTILIZING A REAL-TIME KINEMATIC (RTK) GPS AND REFERENCED TO MLLW UTILIZING A HYPACK KINEMATIC TIDE DATUM (KTD) MODEL NAMED "SPC-FL-WEST-2010-12-07.KTD"
4. ALL ELEVATIONS ARE BELOW THE CHART DATUM UNLESS PRECEDED BY A (+) SIGN.
5. PLANE COORDINATES ARE BASED ON THE TRANSVERSE MERCATOR PROJECTION FOR THE WEST ZONE OF FLORIDA AND REFERENCED TO NORTH AMERICAN DATUM OF 1983 (NAD83).
6. ALL STATIONING REFERS TO THE CENTERLINE OF THE CHANNEL.

REFERENCE BASE LOCATED AT "Q-261" (NGS PID: AG6024)
TIDE STAFF LOCATED FROM "Q-261" (NGS PID: AG6024)
7. THIS SURVEY WAS PERFORMED USING REAL-TIME KINEMATIC (RTK) GPS POSITIONING WITH THE FOLLOWING REFERENCE BASE LOCATIONS:

VESSEL: SB-52 DATE OF SURVEY: 06, 11 JAN 2021 CUT: E.C. AND TURNING BASIN
8. VERTICAL MEASUREMENTS WERE MADE USING A ROSS MODEL 835 SMARTSOUNDER WITH A DUAL-FREQUENCY (28/200 KHZ) SINGLE-BEAM TRANSDUCER. SOUNDINGS SHOWN ARE IN LOW FREQUENCY.
9. AIDS TO NAVIGATION WERE LOCATED DURING THIS SURVEY.
10. THE INFORMATION DEPICTED ON THIS MAP REPRESENTS THE RESULTS OF SURVEYS MADE ON THE DATES INDICATED ABOVE AND CAN ONLY BE CONSIDERED AS INDICATING THE GENERAL CONDITIONS AT THAT TIME. THIS CHART IS SOLELY FOR THE DISTRIBUTION OF AVAILABLE DEPTHS AT THE TIME OF THE SURVEY.
11. SURVEY ACCURACY PERFORMANCE STANDARDS, QUALITY CONTROL, AND QUALITY ASSURANCE REQUIREMENTS WERE FOLLOWED DURING THIS SURVEY IN ACCORDANCE WITH USACE EM 1110-2-1003, HYDROGRAPHIC SURVEYING, 30 NOV 2013.

US Army Corps of Engineers
Jacksonville District

**SAFETY ON THIS JOB
DEPENDS ON YOU**

DEPARTMENT OF THE ARMY
JACKSONVILLE DISTRICT, CORPS OF ENGINEERS
JACKSONVILLE, FLORIDA

ALAFIA RIVER
(TAMPA HARBOR ZONE 8)
HILLSBOROUGH COUNTY, FLORIDA
**HYDROGRAPHIC EXAM SURVEY FY21
33 AND 34-FOOT PROJECT**
INDEX, LOCATION AND VICINITY MAP

Scale: AS SHOWN

Drawing no.
1

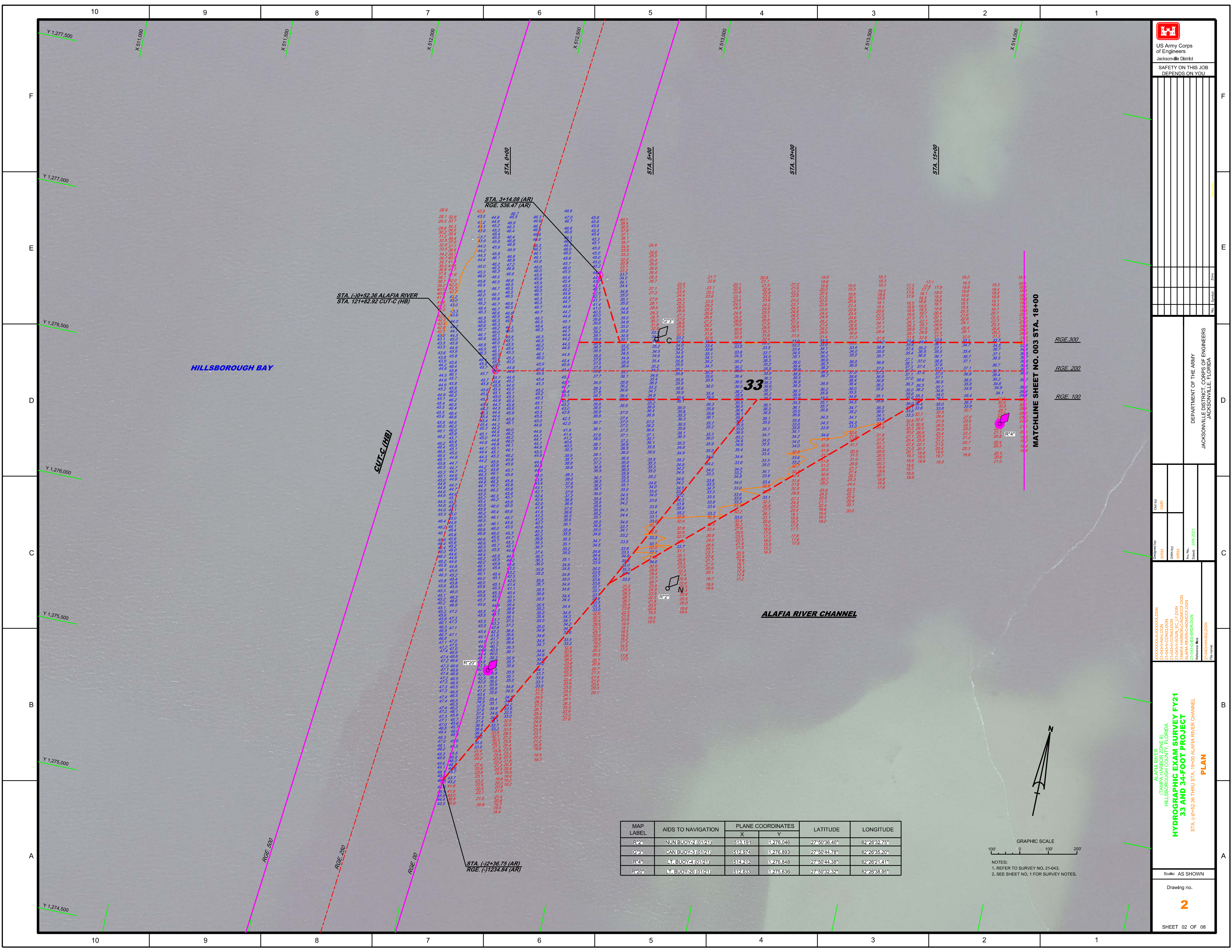
SHEET 01 OF 08

NO.	SYMBOL	DESCRIPTION
1		
2		
3		
4		
5		
6		
7		
8		
9		
10		
11		
12		
13		
14		
15		
16		
17		
18		
19		
20		
21		
22		
23		
24		
25		
26		
27		
28		
29		
30		
31		
32		
33		
34		
35		
36		
37		
38		
39		
40		
41		
42		
43		
44		
45		
46		
47		
48		
49		
50		
51		
52		
53		
54		
55		
56		
57		
58		
59		
60		
61		
62		
63		
64		
65		
66		
67		
68		
69		
70		
71		
72		
73		
74		
75		
76		
77		
78		
79		
80		
81		
82		
83		
84		
85		
86		
87		
88		
89		
90		
91		
92		
93		
94		
95		
96		
97		
98		
99		
100		

DEPARTMENT OF THE ARMY
JACKSONVILLE DISTRICT, CORPS OF ENGINEERS
JACKSONVILLE, FLORIDA

NO.	SYMBOL	DESCRIPTION
1		
2		
3		
4		
5		
6		
7		
8		
9		
10		
11		
12		
13		
14		
15		
16		
17		
18		
19		
20		
21		
22		
23		
24		
25		
26		
27		
28		
29		
30		
31		
32		
33		
34		
35		
36		
37		
38		
39		
40		
41		
42		
43		
44		
45		
46		
47		
48		
49		
50		
51		
52		
53		
54		
55		
56		
57		
58		
59		
60		
61		
62		
63		
64		
65		
66		
67		
68		
69		
70		
71		
72		
73		
74		
75		
76		
77		
78		
79		
80		
81		
82		
83		
84		
85		
86		
87		
88		
89		
90		
91		
92		
93		
94		
95		
96		
97		
98		
99		
100		

ALAFIA RIVER
(TAMPA HARBOR ZONE B)
HILLSBOROUGH COUNTY, FLORIDA
**HYDROGRAPHIC EXAM SURVEY FY21
33 AND 34-FOOT PROJECT**
STA. 0+00 TO STA. 18+00 ALAFIA RIVER CHANNEL
Reference: 18-000

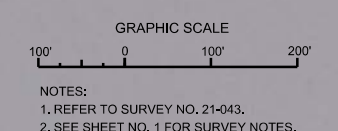


MAP LABEL	AIDS TO NAVIGATION	PLANE COORDINATES		LATITUDE	LONGITUDE
		X	Y		
R2*	NUN BUOY-2 (0121)	513,191	1,276,046	27°50'36.40"	82°26'32.75"
G3*	CAN BUOY-3 (0121)	512,974	1,276,893	27°50'44.78"	82°26'35.20"
R4*	LT. BUOY-4 (0121)	514,212	1,276,848	27°50'44.38"	82°26'21.41"
R20*	LT. BUOY-20 (0121)	512,633	1,275,636	27°50'32.32"	82°26'38.95"

GRAPHIC SCALE
100' 0 100' 200'

NOTES:
1. REFER TO SURVEY NO. 21-043.
2. SEE SHEET NO. 1 FOR SURVEY NOTES.

MAP LABEL	AIDS TO NAVIGATION	PLANE COORDINATES		LATITUDE	LONGITUDE
		X	Y		
G*5	CAN BUOY-5 (01/21)	516.758	11277.695	27°50'52.86"	82°25'53.08"
R*6	LT-6 (01/21)	516.868	11277.394	27°50'49.88"	82°25'51.84"



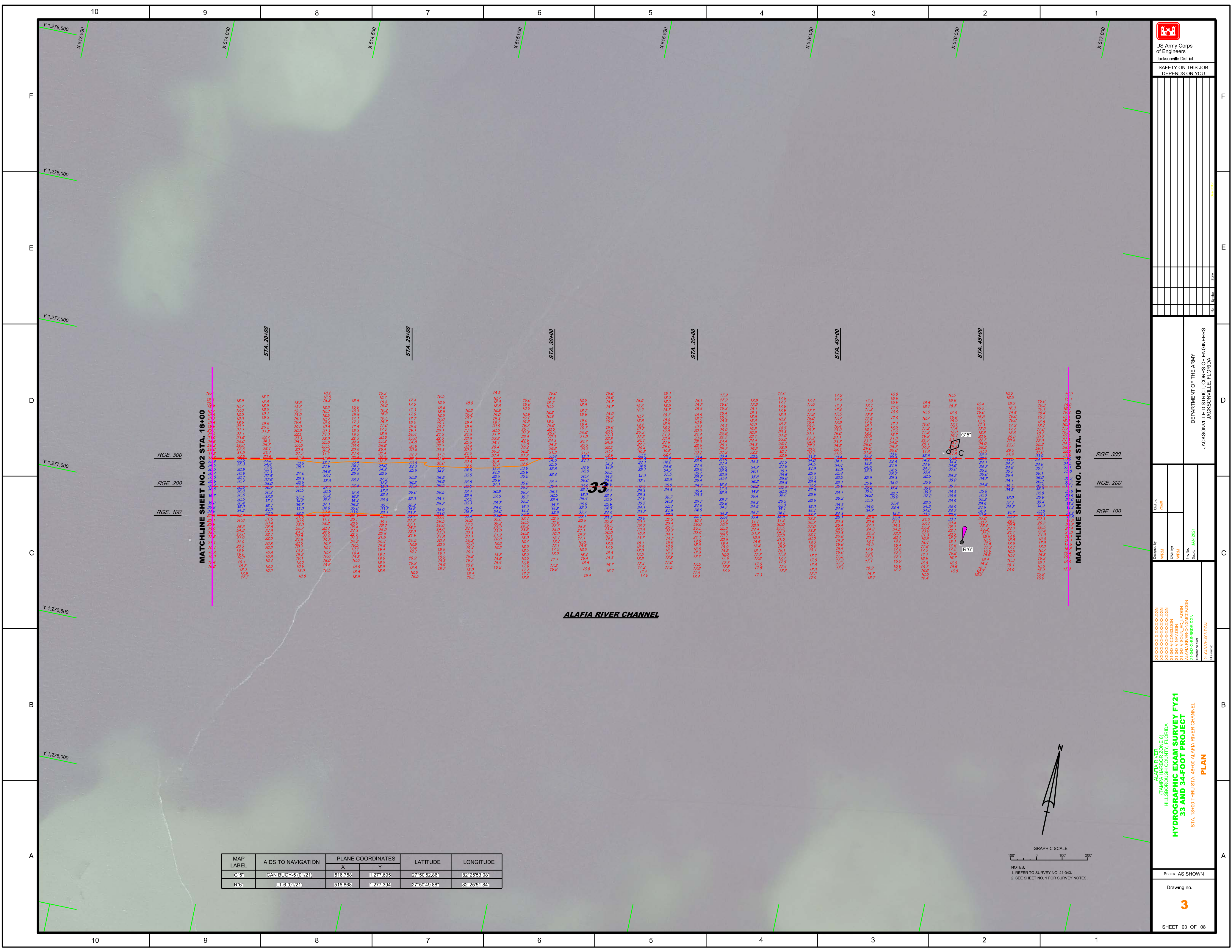
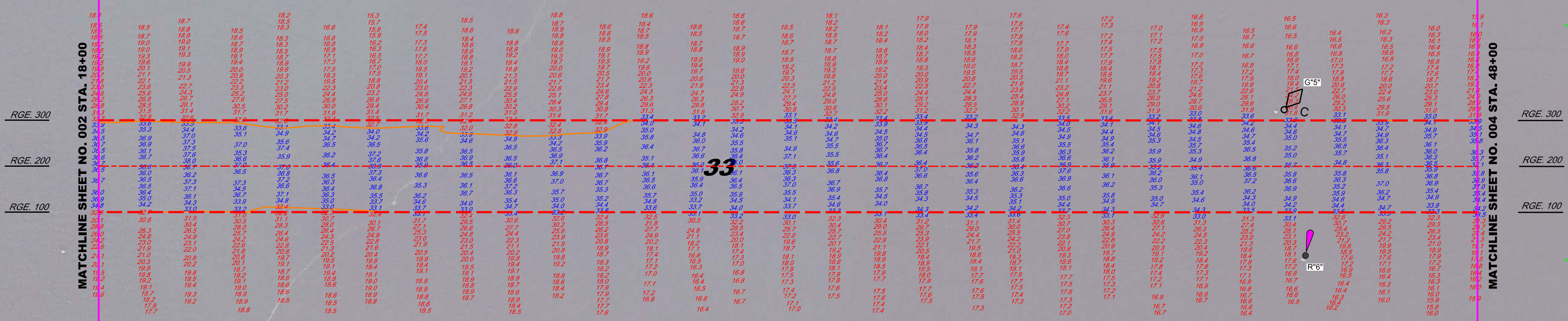
MATCHLINE SHEET NO. 002 STA. 18+00

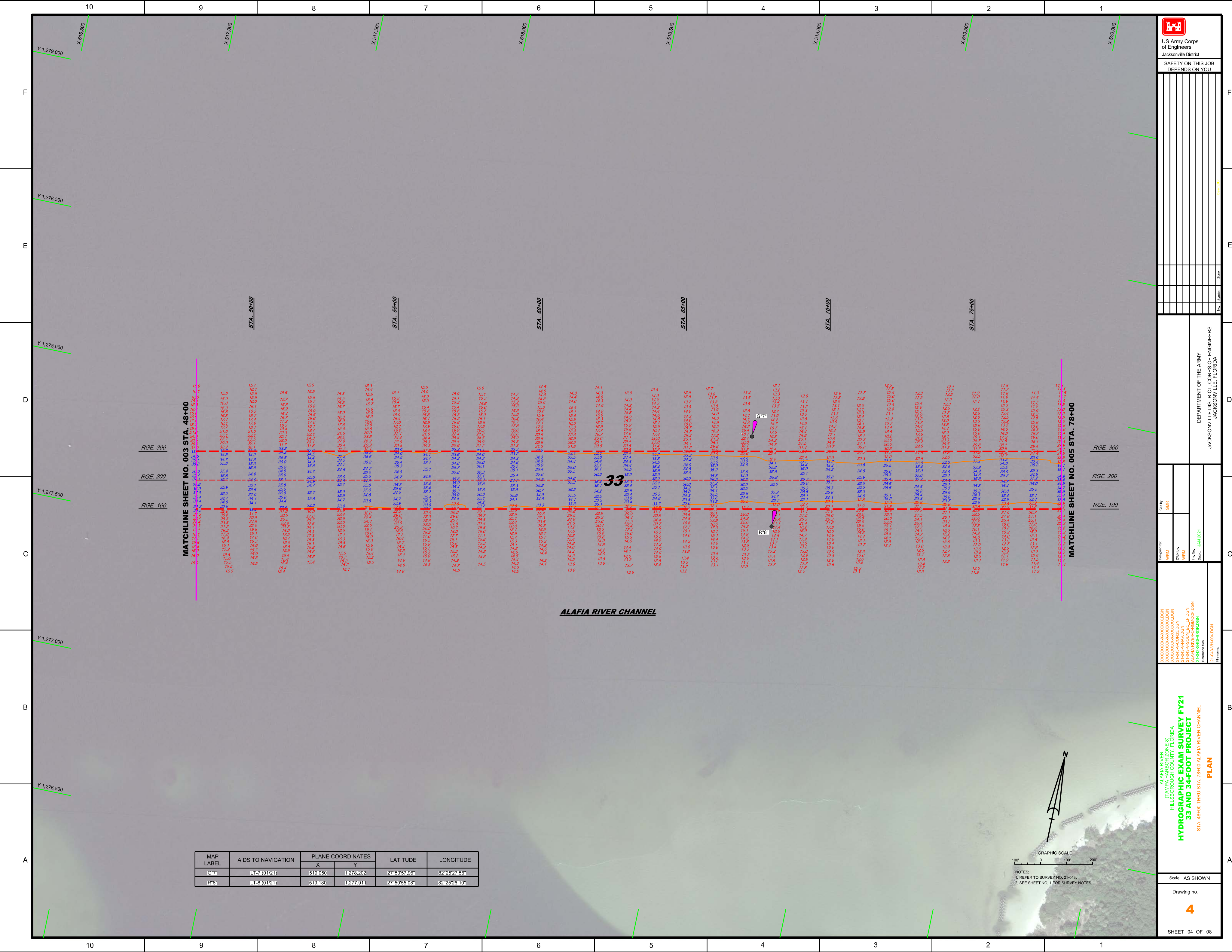
MATCHLINE SHEET NO. 004 STA. 48+00

RGE. 300
RGE. 200
RGE. 100

RGE. 300
RGE. 200
RGE. 100

ALAFIA RIVER CHANNEL



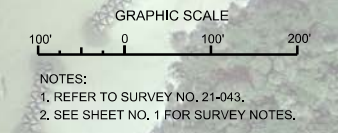


MATCHLINE SHEET NO. 003 STA. 48+00

MATCHLINE SHEET NO. 005 STA. 78+00

ALAFIA RIVER CHANNEL

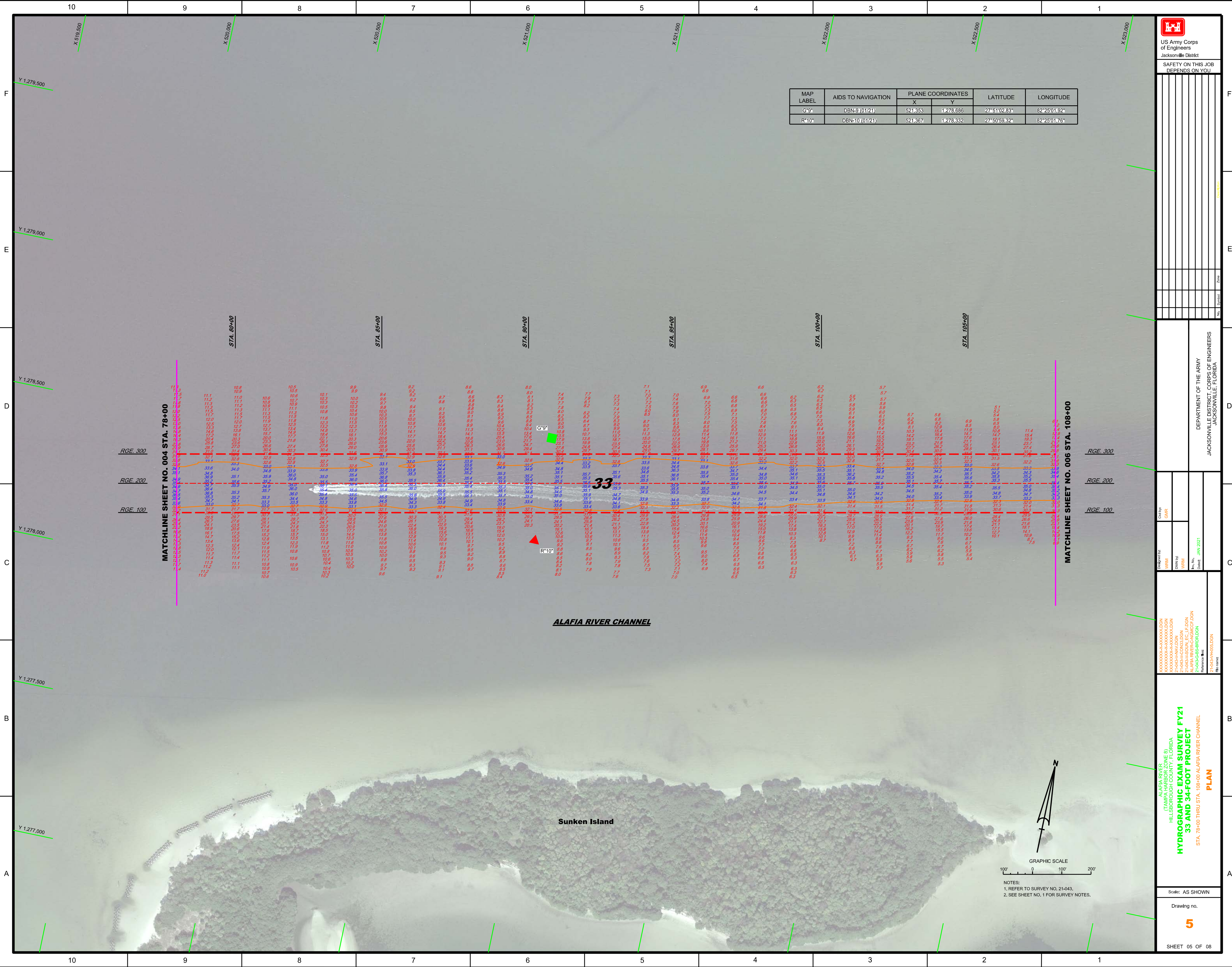
MAP LABEL	AIDS TO NAVIGATION	PLANE COORDINATES		LATITUDE	LONGITUDE
		X	Y		
G-7*	LT-7 (01/21)	519,050	1,278,202	27°50'57.96"	82°25'27.56"
R-8*	LT-8 (01/21)	519,180	1,277,911	27°50'55.08"	82°25'26.10"





US Army Corps of Engineers
Jacksonville District
SAFETY ON THIS JOB
DEPENDS ON YOU

MAP LABEL	AIDS TO NAVIGATION	PLANE COORDINATES		LATITUDE	LONGITUDE
		X	Y		
G°9	DBN-9 (01/21)	521,353	1,278,686	27°5'102.83"	82°25'01.92"
R°10	DBN-10 (01/21)	521,367	1,278,332	27°5'059.32"	82°25'01.76"



MATCHLINE SHEET NO. 004 STA. 78+00

MATCHLINE SHEET NO. 006 STA. 108+00

ALAFIA RIVER CHANNEL

Sunken Island



NOTES:
1. REFER TO SURVEY NO. 21-043.
2. SEE SHEET NO. 1 FOR SURVEY NOTES.

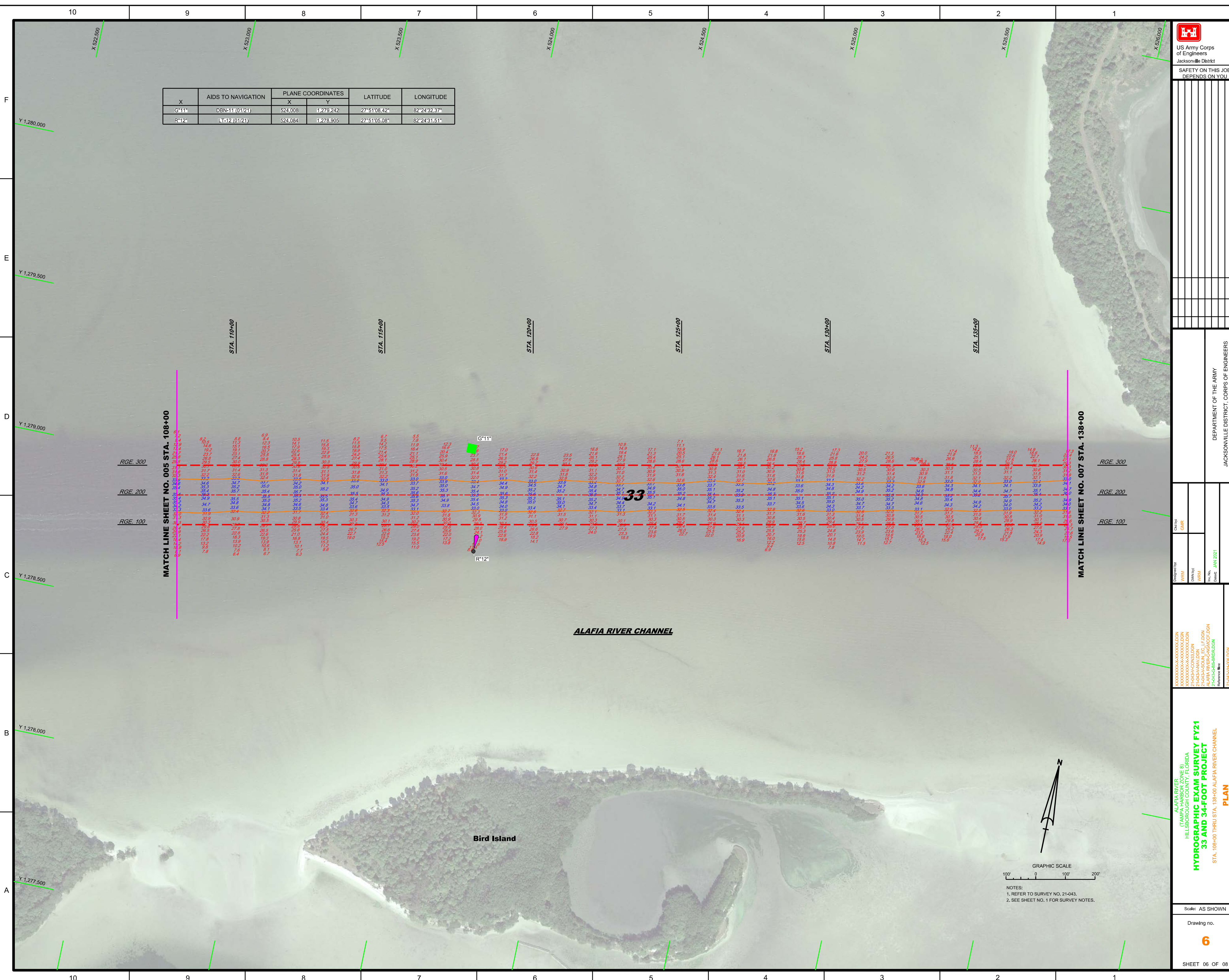
Zone	Zone	Zone	Zone

DEPARTMENT OF THE ARMY
JACKSONVILLE DISTRICT, CORPS OF ENGINEERS
JACKSONVILLE, FLORIDA

Designed by	WBH	DBM	DMW	JAN 2021
Checked by	GHR	WBH	DMW	
	WBH	DMW		

ALAFIA RIVER
HILLSBOROUGH COUNTY, FLORIDA
HYDROGRAPHIC EXAM SURVEY FY21
33 AND 34-FOOT PROJECT
STA. 78+00 THRU STA. 109+00 ALAFIA RIVER CHANNEL
PLAN

Scale: AS SHOWN
Drawing no. **5**
SHEET 05 OF 08



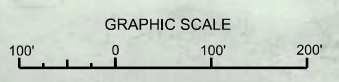
X	AIDS TO NAVIGATION	PLANE COORDINATES		LATITUDE	LONGITUDE
		X	Y		
G*11	DBN-11 (0121)	524.008	1,279.242	27°51'08.42"	82°24'32.37"
R*12	LT-12 (0121)	524.084	1,278.905	27°51'05.08"	82°24'31.51"

MATCH LINE SHEET NO. 005 STA. 108+00

MATCH LINE SHEET NO. 007 STA. 138+00

ALAFIA RIVER CHANNEL

Bird Island



NOTES:
 1. REFER TO SURVEY NO. 21-043.
 2. SEE SHEET NO. 1 FOR SURVEY NOTES.

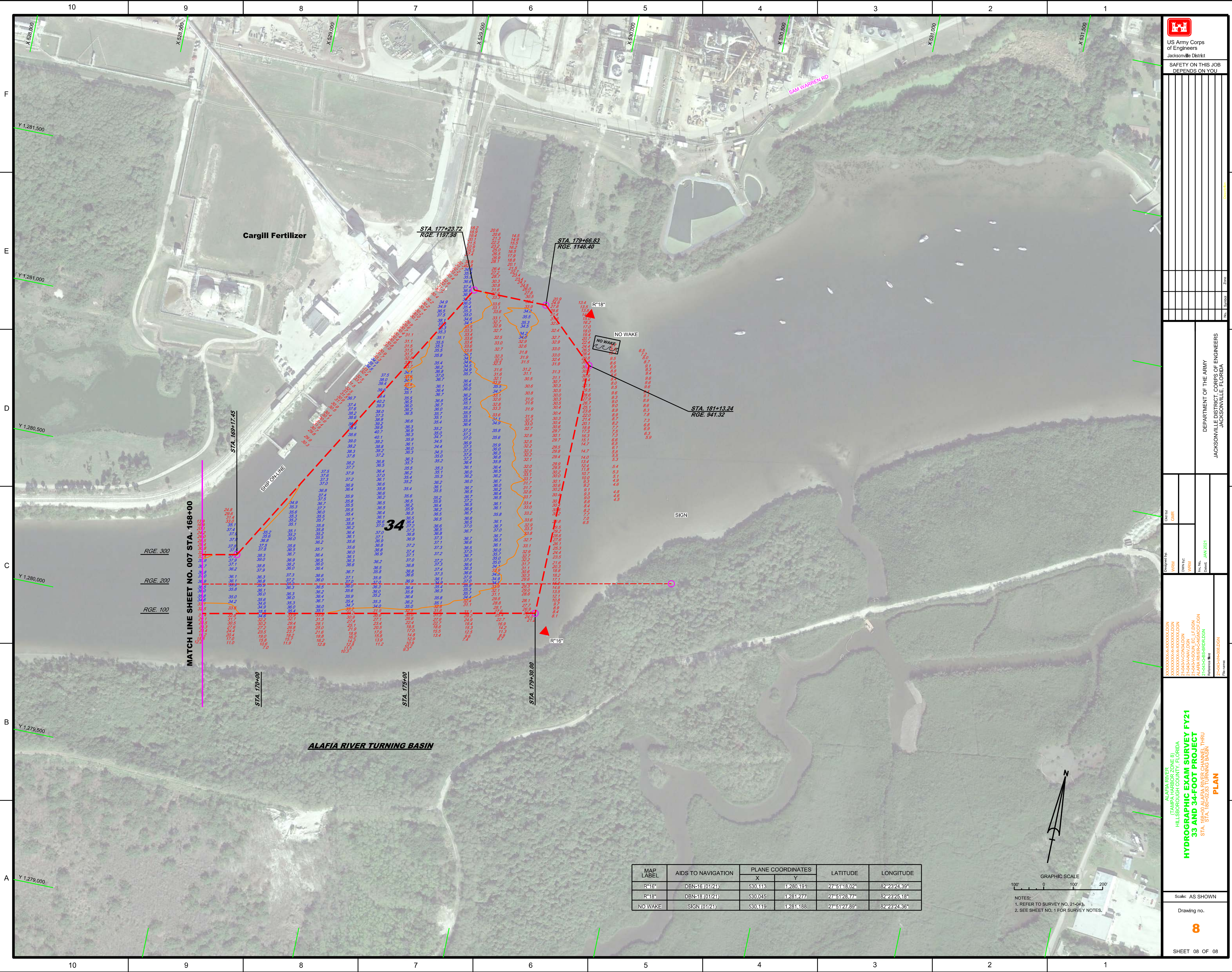
US Army Corps of Engineers
 Jacksonville District
 SAFETY ON THIS JOB
 DEPENDS ON YOU

DEPARTMENT OF THE ARMY
 JACKSONVILLE DISTRICT, CORPS OF ENGINEERS
 JACKSONVILLE, FLORIDA

Designed by: WRM
 Drawn by: WRM
 File No.: 21-043-BB-BR10A.DGN
 Date: JAN 2021

ALAFIA RIVER
 (TAMPA HARBOR ZONE B)
 HILLSBOROUGH COUNTY, FLORIDA
**HYDROGRAPHIC EXAM SURVEY FY21
 33 AND 34-FOOT PROJECT**
 STA. 109+00 THRU STA. 138+00 ALAFIA RIVER CHANNEL
PLAN

Scale: AS SHOWN
 Drawing no.
6
 SHEET 06 OF 08



MATCH LINE SHEET NO. 007 STA. 168+00

Station	RGE. 300	RGE. 200	RGE. 100
168+00	312.8	311.4	310.0
168+05	311.4	310.0	308.6
168+10	310.0	308.6	307.2
168+15	308.6	307.2	305.8
168+20	307.2	305.8	304.4
168+25	305.8	304.4	303.0
168+30	304.4	303.0	301.6
168+35	303.0	301.6	300.2
168+40	301.6	300.2	298.8
168+45	300.2	298.8	297.4
168+50	298.8	297.4	296.0
168+55	297.4	296.0	294.6
168+60	296.0	294.6	293.2
168+65	294.6	293.2	291.8
168+70	293.2	291.8	290.4
168+75	291.8	290.4	289.0
168+80	290.4	289.0	287.6
168+85	289.0	287.6	286.2
168+90	287.6	286.2	284.8
168+95	286.2	284.8	283.4
169+00	284.8	283.4	282.0

MAP LABEL	AIDS TO NAVIGATION	PLANE COORDINATES		LATITUDE	LONGITUDE
		X	Y		
R"16"	DBN-16 (01/21)	530.113	1,280.191	27°51'18.02"	82°23'24.39"
R"18"	DBN-18 (01/21)	530.045	1,281,277	27°51'28.77"	82°23'25.18"
NO WAKE	SIGN (01/21)	530.119	1,281,188	27°51'27.89"	82°23'24.36"



NOTES:
 1. REFER TO SURVEY NO. 21-043.
 2. SEE SHEET NO. 1 FOR SURVEY NOTES.

US Army Corps of Engineers
 Jacksonville District
 SAFETY ON THIS JOB
 DEPENDS ON YOU

DEPARTMENT OF THE ARMY
 JACKSONVILLE DISTRICT, FLORIDA

Drawn by: GHR
 Checked by: GHR
 Date: JAN 2021

ALAFIA RIVER TURNING BASIN
HYDROGRAPHIC EXAM SURVEY FY21
33 AND 34-FOOT PROJECT
 STA. 168+00 ALAFIA RIVER CHANNEL THRU STA. 169+65 ALAFIA RIVER TURNING BASIN

Scale: AS SHOWN

Drawing no. **8**

SHEET 08 OF 08